

CERTIFIED LAND CORNER RECORDATION

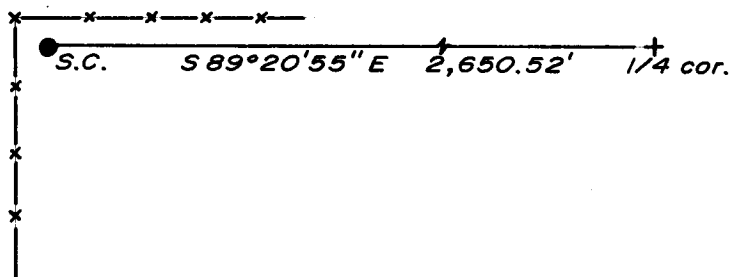
DESCRIPTION OF CORNER EVIDENCE FOUND, AND ORIGINAL RECORD (If known)

LOCATION Found 8" x 8" x 16" Granite boulder with 2 grooves on east and south faces.
 S.22 S.23 G.L.O. record - Granite Boulder 17 x 10 x 9 ; John B. Thomas, 1870
 S.27 S.26
 T.15N., R.67W.
 6th P.M.

DESCRIPTION OF MONUMENT AND ACCESSORIES ESTABLISHED
 TO PERPETUATE THE ORIGINAL LOCATION OF THIS CORNER:

At the corner: Set a 1½" dia. x 30" long (concrete-filled) iron pipe with brass cap.
 Accessories: Left stone as memorial.

SKETCH, WITH COURSE AND DISTANCE TO ADJACENT CORNER IF DETERMINED IN THIS SURVEY.
 (May Sketch or Paste Reproduction on Reverse Side.)



Brass cap set 4" above ground.

Brass cap stamped:

T.15N. R.67W.
 S.C.
 S.22 S.23
 S.27 S.26
 LS 519 1974

I, R.L. Hudson certify that I have carefully performed or reviewed the work done on the diagrammed corner as reported on this recordation form and approve the same.

R.L. Hudson Wyoming L.S. No. 519
 Signature of Surveyor Registration No.

STATE OF WYOMING,
 Office of Clerk and Recorder,
 County of Taramie

This "corner record" was filed for record on the 24 day of June, 1974, was noted on the cross-index plat and is assigned page No. _____, in book No. _____.

John B. Husman
 County Official

Cross Index No.	<u>R 17</u>	T. <u>15</u>	R. <u>67</u>	<u>6</u> Mer.
		T. _____	R. _____	Mer.
		T. _____	R. _____	Mer.
		T. _____	R. _____	Mer.
		T. _____	R. _____	Mer.
		T. _____	R. _____	Mer.
		T. _____	R. _____	Mer.

Photographed ✓
Indexed RP
Posted ✓
Assessor ✓

the State of Wyoming }
County of Laramie } ss
This instrument was filed for record
at 12 51 o'clock 4 M. on the
A. D. 19 24 day of June
Book on page

John B. Williams

County Clerk & Ex-Officio Registrar of Deeds
By JP Deputy